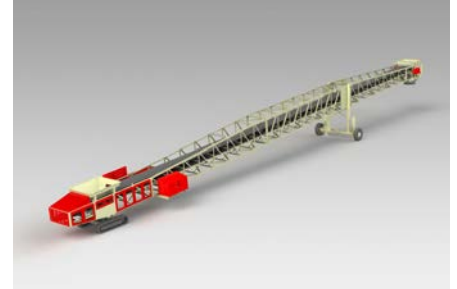


**GLOBAL PORT EQUIPMENT** {  
Iberia

  
**Telestack**<sup>®</sup>  
Mobile Bulk Material Handling



**MOBILE LINK CONVEYORS**



**The Telestack Mobile Link Conveyor range are designed to transfer material over large distances easily. Conveying material is the most cost efficient and environmentally sound method of material transfer.**

Link conveyors offer a flexible solution to help reduce the high running costs of dump trucks or wheel loaders hauling material as fuel, maintenance and operator costs are reduced. The link conveyor can be used on its own or in conjunction with other link conveyors in a zig-zag or in line configuration if required.

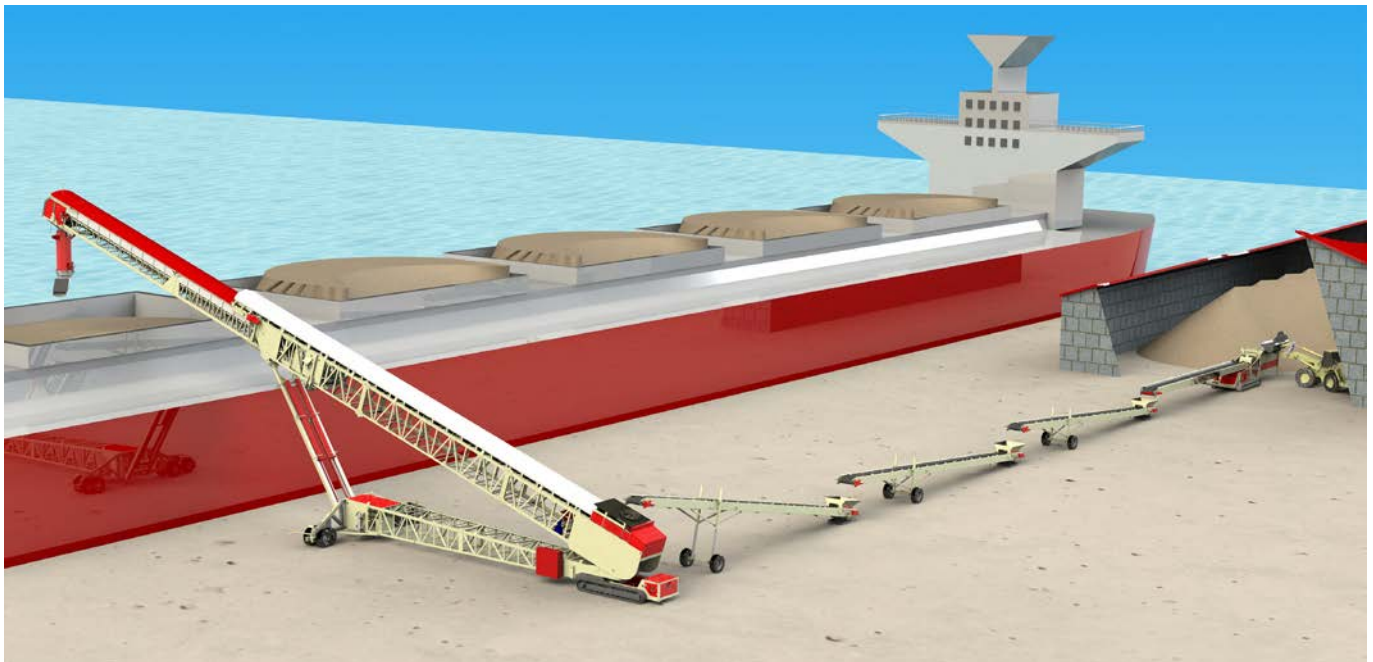
## APPLICATIONS

1. Mobile link within pit to primary / secondary processing plant
2. Mobile link in port from Truck Unloader / Hopper Feeder to Ship loader
3. Mobile link to feed Mobile Shiploading System
4. Mobile Links from warehouse to Port for Ship-loading/ Ship- unloading



## BENEFITS

- Removes the need for a dedicated wheel loader to constantly move material thus reducing double handling
- Adjustable discharge height allows for variable discharge into a multiple range of equipment
- Eliminates the need for high cost dump trucks for moving material from source to processing
- Removing / reducing loading shovel movements reducing operating cost and costs per tonne
- Mobility offers optimum flexibility on site. Links can be moved off site or put into storage when not required
- High specification machine designed for ease of maintenance commanding an excellent resale value at project conclusion.
- Multi purpose equipment for the most cost efficient method of transferring material

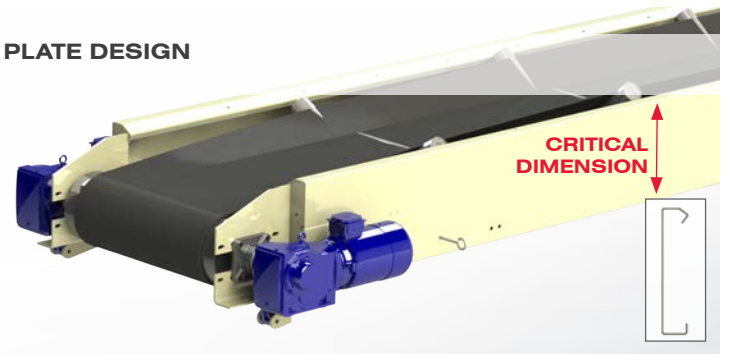


# PLATE RANGE

The 'Plate' Range would be considered the Telestack value range and is renowned for its functionality and performance

- Telestack's Trans-link conveyor range is available at various lengths (15m, 18m, 20m, 24m) allowing for maximum variability depending on application parameters.
- Adjustable heights and choice of length allow the user to spec their unit around their individual application
- Simple yet robust

## PLATE DESIGN



## TL - PLATE RANGE\*

Machine	Conveyor Length	Belt Width Range (mm)	Belt Width Range (Inches)	Frame Depth
TL 15	15m (50 ft)	650/800/900/1050	26" / 32"/36"/42"	500 mm (20")
TL 18	18m (60 ft)	650/800/900/1050	26" / 32"/36"/42"	500 mm (20")
TL 20	21m (70 ft)	650/800/900/1050	26" / 32"/36"/42"	500 mm (20")
TL 24	24m (80 ft)	650/800/900/1050	26" / 32"/36"/42"	500 mm (20")

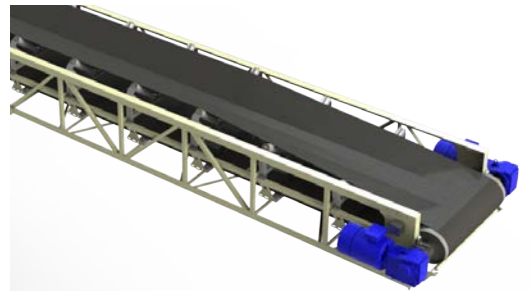
\*Other lengths, tonnage etc are available upon request.





## TRANS-LINK RANGE

- Telestack's Trans-link conveyor range is available at various lengths allowing for maximum variability depending on application parameters.
- The proven lattice design allows the equipment to work at high production rates.
- Adjustable heights and choice of length allow the user to spec their unit around their individual application.



### TL - LATTICE RANGE\*

Machine	Conveyor Length	Belt Width Range (mm)	Belt Width Range (Inches)	Tonnage Capacity (Tph)
TL 18	18m (60 ft)	900/1050/1200/1400/1500	36"/42"/48"/56"/60"	0-3000
TL 21	21m (70 ft)	900/1050/1200/1400/1500	36"/42"/48"/56"/60"	0-3000
TL 24	24m (80 ft)	900/1050/1200/1400/1500	36"/42"/48"/56"/60"	0-3000
TL 30	30m (100 ft)	900/1050/1200/1400/1500	36"/42"/48"/56"/60"	0-3000
TL 35	35m (115 ft)	900/1050/1200/1400/1500	36"/42"/48"/56"/60"	0-3000
TL 40	40m (130 ft)	900/1050/1200/1400/1500	36"/42"/48"/56"/60"	0-3000

\*Other lengths, tonnage etc are available upon request.





## TRANSTACK RANGE

The Telestack Trantrack Conveyors are designed for transferring material over large distances. They are fully mobile self propelled system (Tracks) for easy site movement. Trantrack conveyor's offer a flexible solution and help reduce running costs.

- A mobile link system in quarries/mines along with typical crushing/ screening operations to remove the need for Trucks/ Wheel loaders
- Can follow to blast area as the quarry/mine develops
- Heavy duty design for material from jaw crusher 0-350mm (0-10")



### TT- TRANSTACK RANGE\*

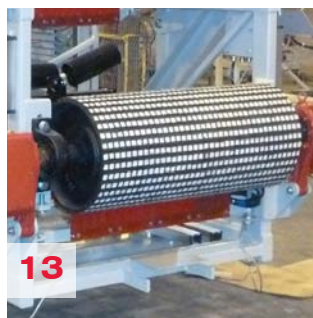
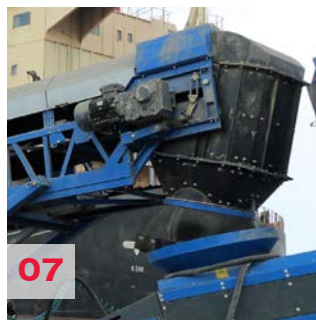
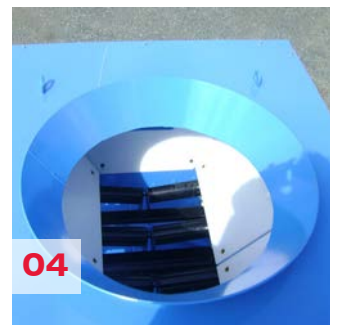
Machine	Conveyor Length	Belt Width Range (mm)	Belt Width Range (Inches)	Frame Depth (mm/inches)	Tonnage Capacity (Tph)
TT 43	43m (140 ft)	1200mm/1400mm/1500mm	48"/56"/60"	1200mm(48")/2000mm(80") 2200mm(88")	0-3000

\*Other lengths, tonnage etc are available upon request.





## STANDARD OPTIONS







- 01 Side Skirting length of conveyor
- 02 Belt Upgrades (Heavy Duty) / Chevron to suit material
- 03 Overband Magnets
- 04 Sealed Feedboot
- 05 Galvanised Dust covers
- 06 Dust Suppression- Water Spray Bars
- 07 Square to Round Head Chute
- 08 Radial - Manual or Hydraulic
- 09 Self Aligning Tracking Rollers
- 10 Power, Cables, Plugs, Sockets to interlink each unit
- 11 Integrated Dust Extraction Filters
- 12 Tracked bogie system (Diesel engine drive)
- 13 Ceramic Lagging on Drive Drum
- 14 Wheeled Dolly Unit

## TRANSPORTATION & CONTAINERISATION

The ease of transport makes it very easy and cost efficient for transporting these units globally. Each unit can be packed into 40ft container and shipped anywhere in the world.



**LOADED INTO 1 X EURO-LINER**



**\*METHOD OF TRANSPORT DEPENDENT ON MODEL**



**LOADED INTO 1 X 40FT CONTAINER**

**GLOBAL PORT EQUIPMENT**  
Iberia



Avda. De Europa 26,  
ATICA 5,2a planta  
28224 Pozuelo de Alarcón  
Madrid - Spain

+34 676 650 601  
iberia@globalportequipment.com  
www.globalportequipment.es



**THE  
POWER  
TO MOVE  
MATERIALS**