

GLOBAL PORT EQUIPMENT {
Iberia


Telestack[®]
Mobile Bulk Material Handling



TITAN 
BULK RECEPTION
FEEDER



Titan T1600-8 the largest mobile bulk reception feeder in the international market

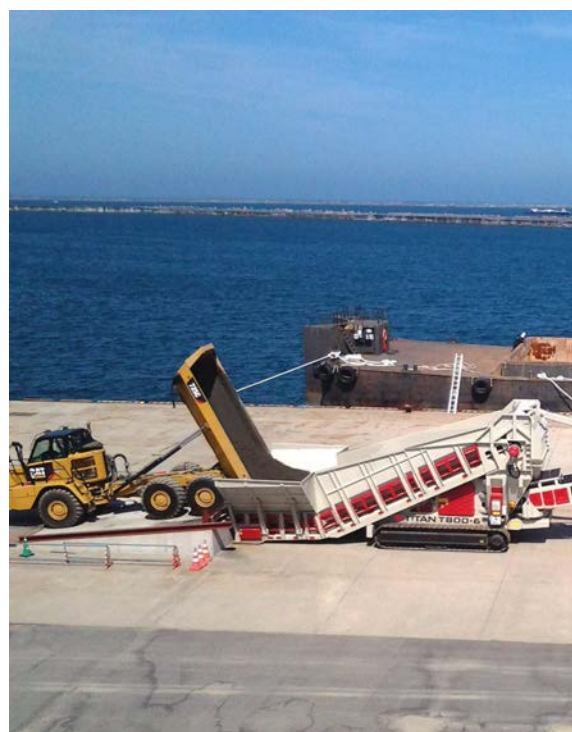


Telestack continues to excel in providing innovative mobile bulk material handling systems to its worldwide customer base. This has been emphasised in the extensive range of Bulk Reception Solutions offered by Telestack.

Telestack's expertise in designing bulk reception feeders means that we fully understand the truck unloading process where tonnages are determined by a wide range of variations from truck capacities to material specification to cycle times. We look at each project individually to ensure that we are providing the correct solution for the customer based on detailed cycle time calculations and knowledge gained from many successful installations globally.

PRIMARILY DESIGNED TO ELIMINATE DOUBLE HANDLING, THE TITAN RANGE CAN:

- receive materials direct from trucks
- receive material direct from rail wagons
- receive material direct from wheel loaders
- receive material from vessels via discharge grab cranes
- be used to load direct to rail wagons
- be used to load direct to vessels
- be used to reclaim onto downstream overland/ stockpiling conveyors
- be available as track mobile, wheel mobile & static versions
- handle wide variety of dry bulk including grain, biomass, fertiliser, coal, cement clinker, aggregates, iron ore and many other heavy ores etc.
- provide intermediate storage and a controlled volumetric discharge



Our solutions offer the most efficient method of transferring bulk material from trucks, rail wagon, wheel loaders or discharge grab cranes to auxiliary equipment in a range of applications and industries. The range offers greater flexibility and mobility than fixed infrastructures while maintaining performance and minimising any civil requirement.

- Eliminate double handling of material
- Various designs to suit a wide range of applications
- Complete mobility and flexibility
- Over 10 years experience supplying Telestack bulk reception solutions



CONTENTS

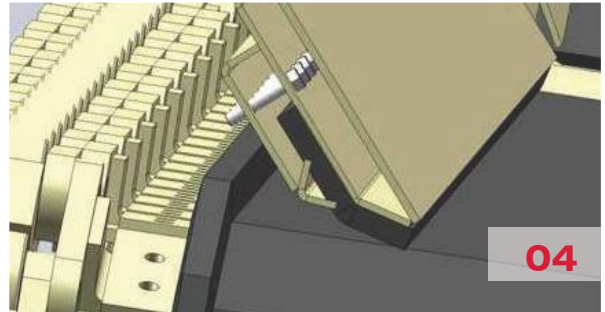
- 04.** UNDERSTANDING OUR TECHNOLOGY
- 06.** METHODS OF FEEDING
- 08.** TYPICAL APPLICATIONS
- 10.** MOBILE & STATIC VERSIONS
- 11.** OPTIONS
- 13.** SHIPPING & ASSEMBLY
- 14.** ABOUT US



UNDERSTANDING OUR TECHNOLOGY

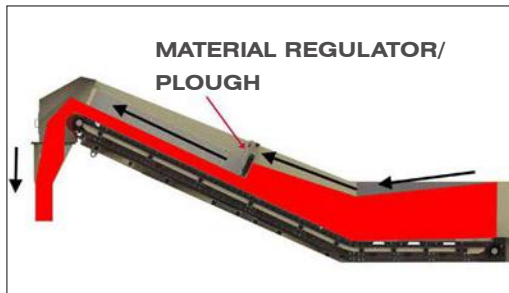
HEAVY DUTY APRON CHAIN BELT FEEDER

Telestack Bulk Reception Feeders incorporate a heavy duty apron chain belt feeder which ensures the surge of material discharging from the truck can be transferred in a regulated and controlled manner. The chain and sprocket driven belt ensures there is no stalling of the feed conveyor compared to regular 'roller type' belt feeders.

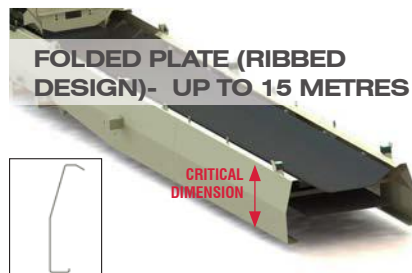
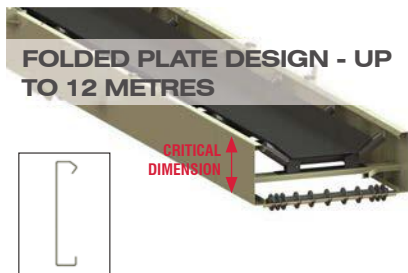


- 01** Heavy Duty apron chain belt feeder
- 02** Steel Apron Bars to absorb material surge and impact
- 03** Ventilated chassis to allow spilled material to be rejected for chain protection
- 04** Flexible side seal skirting
- 05** Electric or hydraulic drives - single or twin options
- 06** Flared high capacity feeder to accept material

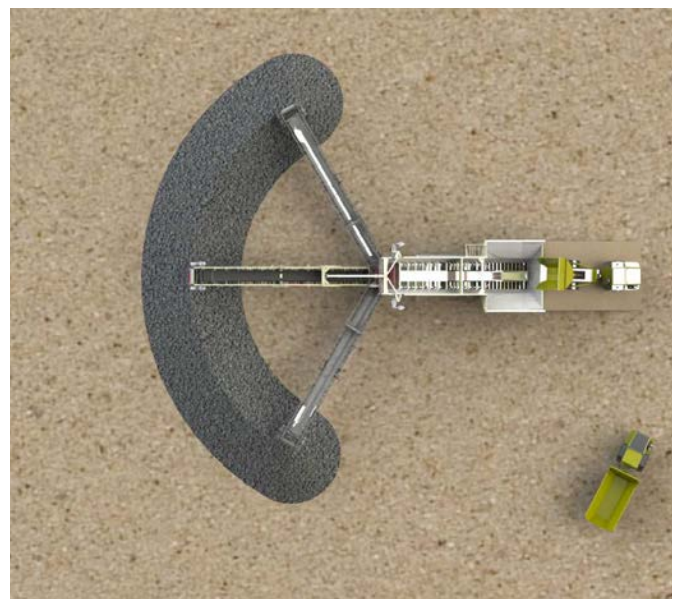
RECEPTION HOPPER



DISCHARGE BOOMS



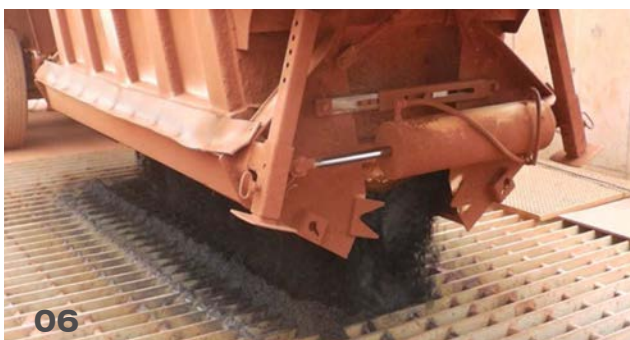
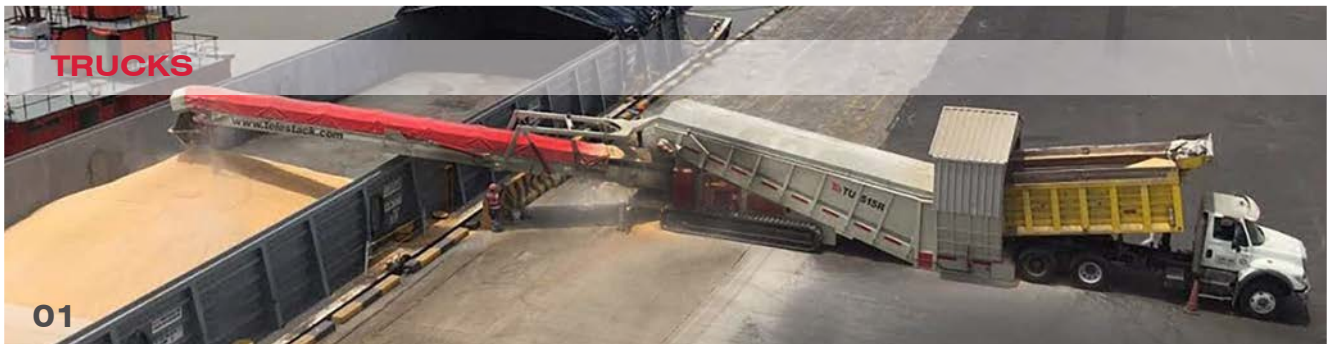
LATTICE BOOM BULK RECEPTION FEEDER



RADIAL BOOM BULK RECEPTION FEEDER

"THE CONVEYOR FRAME DESIGN IS A CRITICAL FACTOR TO ENSURE THAT THE MACHINE IS SUITABLE FOR THE TASK IN HAND"

METHODS OF FEEDING



WHEEL LOADERS



RAIL CARS/ WAGONS



GRAB CRANES



MOBILE BULK RECEPTION FEEDERS...

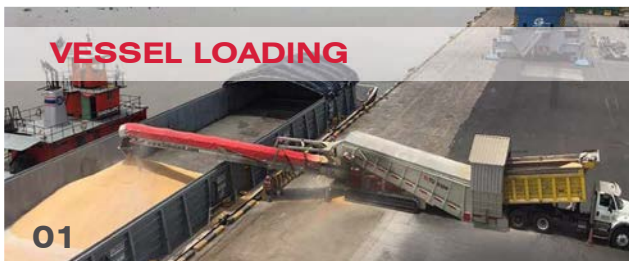
- 01 Fed by 18m³ 6 wheel road truck
- 02 Fed by 2 ? 8 wheel road truck
- 03 Fed by 40 tonne ADT
- 04 Fed by 45 tonne ADT
- 05 Fed by 100 tonne rigid dump truck.
- 06 Belly Dump over grid
- 07 Drive Over Bulk Reception Feeder fed by road truck
- 08 Fed from the rear by a wheel loader
- 09 Fed from the rear by a wheel loader
- 10 Feeding truck unloader from the side
- 11 Feeding truck unloader from rear
- 12 Static Bulk Reception Feeder being fed by rail car/ wagon
- 13 Fed by rail car/ wagon
- 14 Fed from grab crane in barge unloading application
- 15 Fed from grab crane transferring onto a Radial Telescopic Conveyor

TYPICAL APPLICATIONS



**BULK RECEPTION FEEDERS ARE USED FOR
UNLOADING TRUCKS AND ELIMINATING THE DOUBLE
HANDLING OF MATERIAL IN:**

**PORTS & INLAND TERMINALS MINES
QUARRIES STOCKYARDS POWERSTATIONS
WASTE WATER INDUSTRY CEMENT PLANTS
BIOMASS FUEL HANDLING RECYCLING PLANTS**



01



02



03



04



05

VESSEL UNLOADING



06

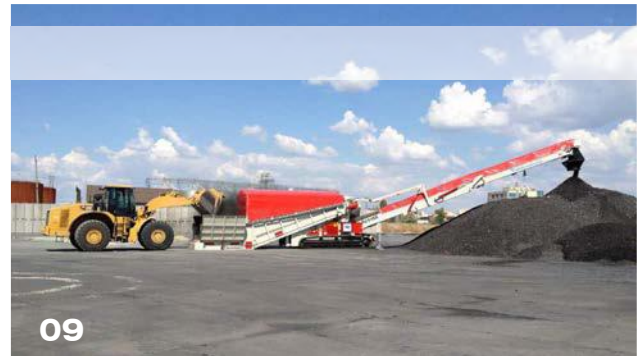


07

STOCKPILING



08



09

RECLAIMING

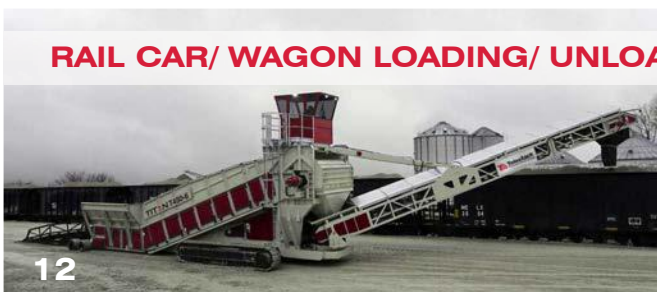


10



11

RAIL CAR/ WAGON LOADING/ UNLOADING



12



13

MOBILE BULK RECEPTION FEEDERS...

- 01 Loading a barge with grain direct from a road truck
- 02 Loading a barge direct from a road truck
- 03 Loading a barge direct from a wheel loader
- 04 Feeding a Radial Telescopic shiploader loading a Handymax vessel
- 05 Feeding a Radial Telescopic shiploading from road trucks
- 06 Fed from grab crane in barge-unloading application
- 07 Feeding Radial Telescopic, stockpiling in warehouse from trucks (Ship unloading)
- 08 Stockpiling material from pay-loaders in a stockyard
- 09 Stockpiling coal from wheel loader in a stockyard (Dust Covers)
- 10 Bulk reception feeder feeding onto reclaim line
- 11 Reclaiming iron ore in a steel mill with CAT 988 Wheel loader
- 12 Rail Car/ Wagon loading directly from trucks
- 13 Unloading from Rail Car/Wagon

MOBILE & STATIC VERSIONS



The Titan can be provided in a number of formats. For greater flexibility, a mobile Titan can perform a number of functions, possibly on different sites.

Mobility can be provided on:

- A tracked version with self-propelled power so that a single operator can operate and move the unit as needed
- A wheeled version where the unit can be moved by wheel loader, fork lift truck or similar
- A Static Version is also available and with many fixed plants these are the preferred solution for many industries



OPTIONS

Telestack Bulk Reception Feeders are custom designed and manufactured to meet the specific needs of the operator with these options available as standard. The options allow complete flexibility for the operator when taking into consideration the differing mobility needs, materials, power and electrical requirements of the client.

DUST CONTAINMENT & SUPPRESSION



POWER OPTIONS



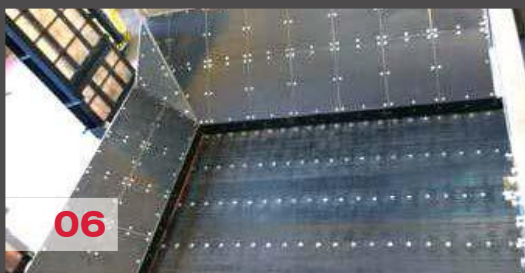
- 01 Fully enclosed feed in point with flexible PVC entry curtains
- 02 Full sealed transfer point from feeder belt onto incline belt
- 03 Fully enclosed canvas covers on conveyor
- 04 Dust extraction system
- 05 Rubber Discharge Chute & Enclosed Square to Round Head Chute
- 06 Dust suppression water spray bars
- 07 Dual Power- Diesel Hydraulic & Electric Hydraulic
- 08 Diesel Hydraulic Engine
- 09 All Electric or hydraulic conveyor drives
- 10 All function radio remote control
- 11 Diesel Electric Generator

* If other options are required please contact your dealer or the Telestack factory.

RAMPS



MISCELLANEOUS OPTIONS

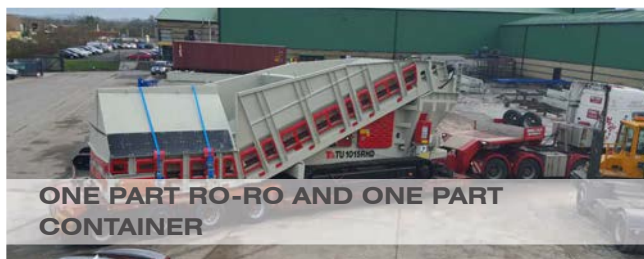


- 01 Static Bulk Reception Feeder with earth ramp for 'Tip & Go' application
- 02 Wheel Mounted Truck Unloader with integrated ramps
- 03 Track Mounted with hydraulic folding ramps

- 04 Fully customized colours & 250 micron paint finish (marine specification)
- 05 Integrated flood lights for night operations
- 06 Range of liners bolted into transfer points
- 07 Access/ Working Platform with or without generator

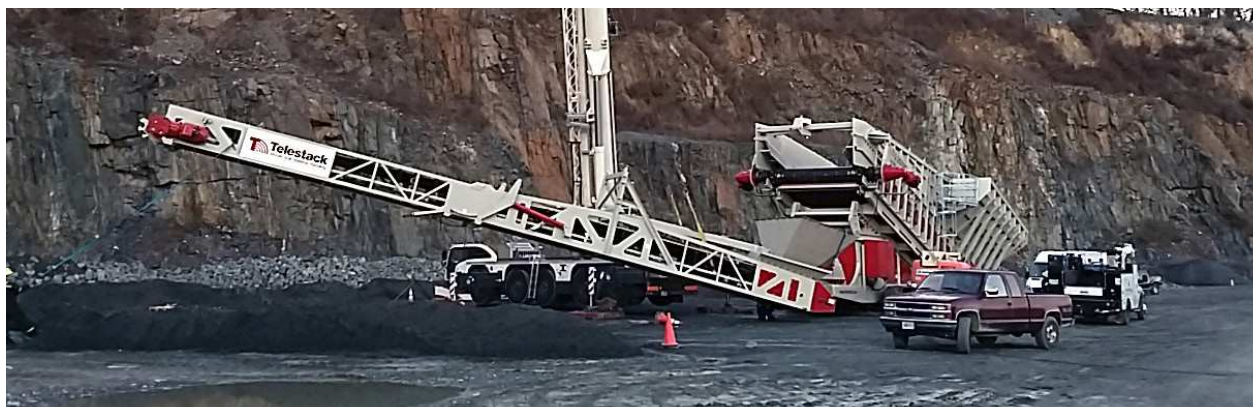
SHIPPING

- All equipment is designed, manufactured, built and fully tested before dispatch
- The client is welcome to inspect the complete unit during the testing procedure in the Telestack factory for approval
- Smaller units are shipped via 'Ro-Ro' and easily tracked into position, folded out and ready to operate
- Telestack units can be packed into 40ft (12m) containers to reduce transportation costs for the operator



SHIPPING & ASSEMBLY

ONSITE ASSEMBLY & INSTALLATION



RO-RO

- Smaller track mounted Titan Bulk Reception Feeders track straight off the trailer ready to operate
- Larger track mounted Titan Bulk Reception Feeders ship as one part Ro-Ro and one part container. Typical assembly time to build and commission is two days
- Titan track mounted units are generally diesel hydraulic. They are fully built and tested before shipping, eliminating complex assembly on site

WHEEL/ STATIC

- All machines are fully built and tested prior to dispatch. Generally shipped in 40ft (12m) shipping containers
- Titan wheel/ static Bulk Reception Feeders are generally all electric. All units are pre-wired. Plug and play electrics eliminates complex assembly on site
- Telestack can supply (if required) an installation Engineer to oversee the process, dry/wet commission the unit and provide detailed training for operators for containerised shipments

“FAST & EASY TO ASSEMBLE”



Telestack specialise in the complete design, manufacture, installation and commissioning of mobile bulk material handling systems. We have a global proven record in a range of applications including quarry and mining industries, ports & inland terminals, stockyard management, power stations, rail yards, steel mills, cement kilns and many other bulk material handling industries. Our mobile solutions offer significant operating cost savings compared to traditional methods of material handling (wheel loaders, haul trucks, static conveyors), as well as providing Environmental, Health and Safety and other benefits. Other significant benefits include reduced planning requirements due to product mobility and the flexibility to move Telestack mobile equipment around the site or from site to site.

EXPERIENCE

The Telestack team have 30 years international experience designing, manufacturing, installing and supporting equipment. We offer the right solution for the customer and customise the design to suit your specific requirements. Our long-standing Sales and Application Specialists are involved at every stage of the process and our Project Management department ensures that the unit is built to the agreed specification and within the agreed timeframe. Our company has naturally matured into two distinct divisions: Telestack

Aggregates and Mining and Telestack Ports and Inland Terminals. These specialist divisions truly understand their trade and our Clients benefit from our experience. There is also a wealth of reference sites in a range of applications across the globe that demonstrates this experience first-hand and an exceptionally high returning custom rate – well above industry standard! Our customers range in size, nature and requirements but we are steadfast in the conviction that the customer at the heart of our business – without them we cease to exist!

Telestack products can handle all free flowing bulk materials including ores, coal, aggregates, fertilizers, grains, woodchips, pellets and many more bulk materials!

Working from their modern headquarters in the N. Ireland, Telestack offer a complete in-house design, manufacture and assembly of all units. All Telestack units are fully built and tested prior to dispatch. All electric/ hydraulics and operating functions are tested and recorded and comprehensive quality checks are recorded prior to dispatch (in strict accordance with ISO guidelines). Any issues are identified, resolved and re-tested before they leave our premises.

Extensive investment has been made to ensure our global supply chain is responsive to our needs and the needs of our customer. We source components that meet our high expectations and trade only with

suppliers who are best positioned to support our global Clients.

QUALITY

Quality has always been at the core of the Telestack brand and they have always been renowned throughout the industry for the high quality of their machines. As a UKAS accredited company, ((ISO 9001 (Quality Management), ISO 14001 (Environmental Management), OHSAS 18001 (Health & Safety Management))), the Telestack Integrated Management System (IMS) ensures that anything which has an effect on overall business performance is monitored, actioned and improved as a natural part of their business culture. Complimented by the Investors in People Award, Telestack take quality seriously at every stage from the people that they employ, to their supplier of components to the internal processes that they use on a daily basis.

There is an advanced lean manufacturing program in place and as well as an advanced in-house safety program for all employees. We have made significant investment in our facilities and can now boast one of the most technically advanced blasting/ painting facilities in the world.

In addition Telestack equipment can be designed for the onerous demands of mining applications and we are an approved supplier of equipment that meets Western Australian Mining Structural Stand-



ards (AS 4324.1), guarding (AS1755) and electrics (AS3000). We have also designed structures to operate safely in earthquake zones throughout the world. Our electrical design team can also design/specify to meet local electrical standards.

ASSEMBLY/ INSTALLATION

Site assembly can be less than one week with limited civil construction needed on site. Our service engineers can be arranged for dry and/or wet commissioning of units on-site and on-site training can be provided. Engineers can also support your equipment in the field as part of our Field Service Programme to ensure

uptime of the product. Additionally we also have a network of Dealers, Agents and Partners across the globe that are hand-picked for their expertise in the material handling field, and who are there to assist you on our behalf!

AFTERSALES

The Telestack after-sales department work continuously to put the customer at the heart of their department and they aim to solve problems quickly to ensure the safe and efficient operation of Telestack equipment in the field. Our parts packages are tailored to suit the equipment, the application and the location and our

team are focused on ensuring you receive the correct part the first time, on time, every time!

To support the Telestack units in the field, we have a product helpdesk that is manned by our Engineers who understand and have personally worked with Telestack units. If equipment in the field does experience issues, the Telestack support desk is committed to get the unit up and running as quickly as possible. We act with urgency and are responsive to the business needs of our customer!

Telestack has successfully established a reputation as a supplier of choice with many blue chip companies around the world including:

- Port of Panama City (USA)
- Port of Vostochny (Russia)
- Port of Alexandria (Egypt)
- Port of Gangavaram (India)
- Port of Brisbane (Australia)
- Port of Coquimbo (Chile)
- Port of Belfast (N.Ireland)
- Port of Dhamra (India)
- Port of Kembla (Australia)
- Port of Barranquilla (Colombia)
- Port of Ust Luga (Russia)
- Port of Imbituba (Brazil)
- Port of Kakinada (India)
- Port of Buchanan (Liberia)
- Port of Jaigarh (India)
- Riga Commercial Port
- Krishnapatnam Port
- Premier Periclane
- Cemex
- Mechel
- Nibulon
- BHP Billiton
- Holcim
- Ural Kili
- Norilsk Nickel
- La Farge
- Rusal
- Tarmac
- Fortescue
- Oldendorff
- Tata Steel
- Van Oord
- Fomento
- Thyssen Krupp
- La Farge
- Larsen + Toubro
- Glencore Xstrata
- Heidelberg Cement
- Martin Marietta
- Vulcan
- Glencore Xstrata
- Severstal
- Eurovia
- LKAB
- FLSmidth
- Anglo American
- Codelco
- JSW
- Ennstone Breedon
- Imerys
- CRH
- SUEK
- Jindal Steel
- Arcelor Mittal
- Electrosteel
- Peter Hambro
- Rio Tinto
- Qube

GLOBAL PORT EQUIPMENT {
Iberia

Avda. De Europa 26,
ATICA 5,2a planta
28224 Pozuelo de Alarcón
Madrid - Spain

+34 676 650 601
iberia@globalportequipment.com
www.globalportequipment.es



**THE
POWER
TO MOVE
MATERIALS**