

GLOBAL PORT EQUIPMENT {
Iberia


Telestack
AGGREGATES & MINING



TRACK CONVEYORS





CONTENTS

- 04.** BENEFITS OF TELESTACK TRACKED CONVEYORS
- 05.** TRACKED CONVEYOR - X RANGE
- 07.** TRACKED CONVEYOR - STANDARD
- 09.** RADIAL TRACKED CONVEYOR
- 10.** TC REVOLUTION
- 12.** TCL 100
- 13.** TRACKED CONVEYOR - LATTICE & TRACKED TELESCOPIC CONVEYOR
- 15.** STANDARD OPTIONS
- 16.** TRANSPORTATION & CONTAINERISATION



Telestack equipment has a proven record of performance and reliability, operating in all types of applications and climates around the world.

Satisfied customers include Cemex, La Farge, Holcim, CRH, Anglo American, Rio Tinto, BHP Billiton, Martin Marietta & Heidelberg.



STOCKPILING RECIRCULATING LINKING TRUCK LOADING SHIPLOADING RAIL LOADING

- Eliminate double handling of material with wheel loaders
- Stockpiling rates from 100 - 1500 TPH*
- Stockpiling 0 - 300 mm (12 inch down) material
- Environmental benefits – reduced noise, dust and emissions
- Safety benefits - less site traffic movement
- Discharge heights up to 14 metres (45ft 6")
- Conical stockpile up to 6,940 tonnes – 4,338m³ (5,675 yds³ – 7,650 ton)
- Radial stockpile up to 15,123 tonnes – 9,452m³ (12,362 yds³ – 16,670 ton)

*Based on bulk density of 1.6 t/m³(100lbs / per cubic ft)



ELIMINATE / REDUCE THE USE OF
WHEEL LOADERS / TRUCKS!



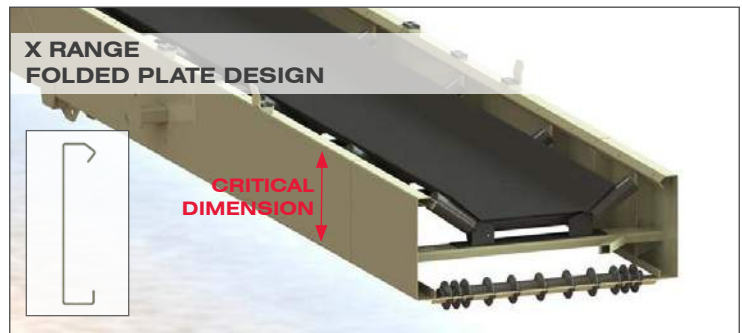
AGGREGATES SAND / GRAVEL IRON ORE COAL FERTILISER GRAIN WOODCHIPS



X RANGE

The X-Range would be considered the Telestack value range and is renowned for its functionality and performance

- Lengths from 15m to 24m (50ft - 80ft)
- Typically working after mobile screens
- Up to 400 TPH
- Folded plate design





TC 424X STOCKPIILING LIMESTONE



TC 424X & HF 10T STOCKPIILING TAILINGS



TC 424XR STOCKPIILING AGGREGATES

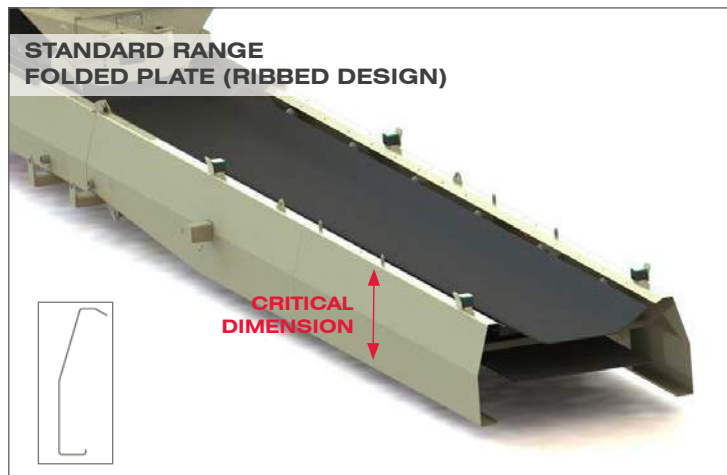
TRACKED STOCKPIILING CONVEYORS - X RANGE (UP TO 400 TPH)*

Machine	Conveyor Length	Discharge Height (20 degrees)	Belt Width	Stockpile Volume	Stockpile Mass @ 1.6t/m ³
TC 415X	15 m (50 ft)	6.5 m (21 ft 4")	1050 mm (42")	480 m ³ (630 yd ³)	775 Tonnes (850 Ton)
TC 418X	18 m (60 ft)	7.92 m (25 ft 9")	800 mm (32")	770 m ³ (1,010 yd ³)	1,235 Tonnes (1,360 Ton)
TC 420X	20 m (66 ft)	9.31 m (30 ft 3")	1050 mm (42")	1,400 m ³ (1,830 yd ³)	2,240 Tonnes (2,470 Ton)
TC 424X	24 m (78 ft)	10.8 m (35 ft 2")	1050 mm (42")	2,085 m ³ (2,730 yd ³)	3,340 Tonnes (3,680 Ton)
Machine	Conveyor Length	Discharge Height (20 degrees)	Belt Width	Stockpile Volume (180 degrees)	Stockpile Mass @ 1.6t/m ³ (180 degrees)
TC 420XR	20 m (66 ft)	8.24 m (26 ft 9")	1050 mm (42")	6,427 m ³ (8,406 yd ³)	10,283 Tonnes (11,311 Ton)
TC 424XR	24 m (78 ft)	9.37 m (30 ft 5")	1050 mm (42")	8,435 m ³ (11,030 yd ³)	13,490 Tonnes (14,870 Ton)

*Based on bulk density of 1.6 t/m³(100lbs / per cubic ft)

The Telestack standard tracked stockpiling range is renowned in the industry for its strength and reliability

- Designed with a deeper mid section for extra strength and rigidity
- Better suited for higher tonnage / larger surges/ larger lump size
- Ribbed boom design in tail, mid & head section for added strength



STANDARD RANGE





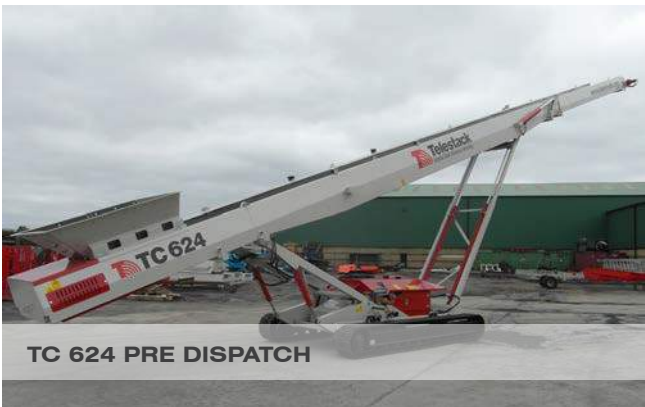
TC 424 STOCKPIILING SAND



TC 424 STOCKPIILING FROM A MOBILE SCREEN



TC 621 STOCKPIILING FROM A PRIMARY JAW (0-200 MM/ 600TPH)



TC 624 PRE DISPATCH

TRACKED STOCKPIILING CONVEYORS - STANDARD RANGE (UP TO 600 TPH)*

Machine	Conveyor Length	Discharge Height (20 degrees)	Belt Width	Stockpile Volume	Stockpile Mass @ 1.6t/m ³
TC 421	21.8 m (71 ft)	10.02 m (32 ft 7")	1050 mm (42")	1,555 m ³ (2,035 yd ³)	2,500 Tonnes (2,750 Ton)
TC 621	21.8 m (71 ft)	10.02 m (32 ft 7")	1050 mm (42")	1,555 m ³ (2,035 yd ³)	2,500 Tonnes (2,750 Ton)
TC 424	24 m (78 ft)	10.8 m (35 ft 2")	1050 mm (42")	2,085 m ³ (2,730 yd ³)	3,340 Tonnes (3,680 Ton)
TC 624	24 m (78 ft)	10.8 m (35 ft 2")	1050 mm (42")	2,085 m ³ (2,730 yd ³)	3,340 Tonnes (3,680 Ton)

*Based on bulk density of 1.6 t/m³(100lbs / per cubic ft)

RADIAL RANGE- STANDARD



TC 421R STOCKPIILING AGGREGATES



OPTIONAL ON BOARD SENSORS FOR AUTOMATIC STOCKPIILING



TC 424R STOCKPIILING FROM PRIMARY JAW CRUSHER

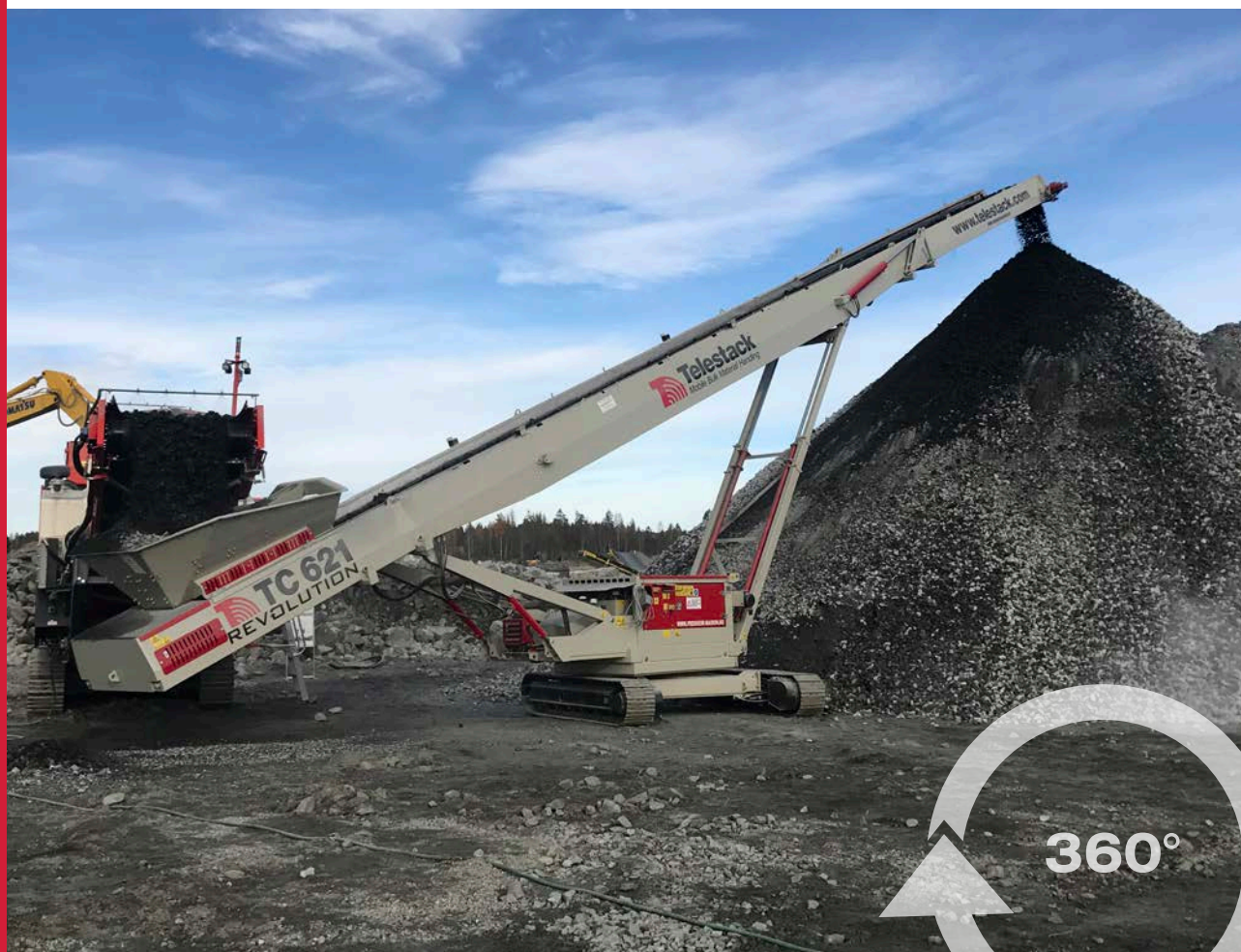


TC 621R STOCKPIILING FROM MOBILE SCREEN

TRACKED STOCKPIILING CONVEYORS - STANDARD RANGE (UP TO 600 TPH)*

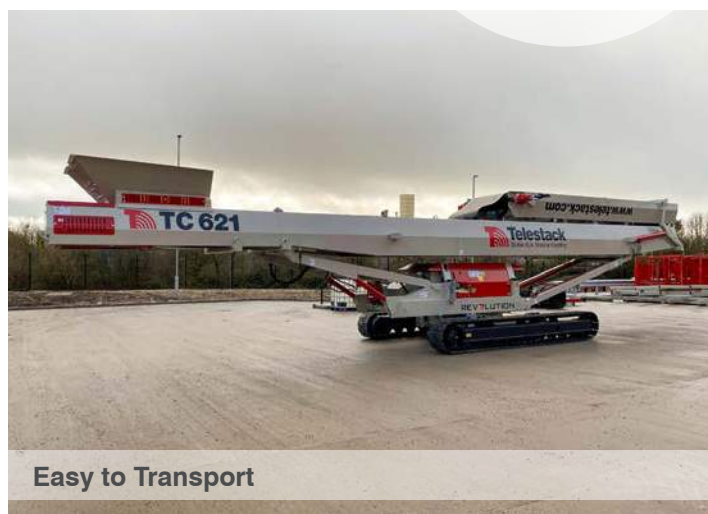
Machine	Conveyor Length	Discharge Height (20 degrees)	Belt Width	Stockpile Volume (180 degrees)	Stockpile Mass @ 1.6t/m ³ (180 degrees)
TC 421R	21.8 m (71 ft)	8.68 m (28 ft 2")	1050 mm (42")	6,430 m ³ (8,410 yd ³)	10,290 Tonnes (11,340 Ton)
TC 621R	21.8 m (71 ft)	8.68 m (28 ft 2")	1050 mm (42")	6,430 m ³ (8,410 yd ³)	10,290 Tonnes (11,340 Ton)
TC 424R	24 m (78 ft)	9.37 m (30 ft 5")	1050 mm (42")	8,435 m ³ (11,030 yd ³)	13,490 Tonnes (14,870 Ton)
TC 624R	24 m (78 ft)	9.37 m (30 ft 5")	1050 mm (42")	8,435 m ³ (11,030 yd ³)	13,490 Tonnes (14,870 Ton)

*Based on bulk density of 1.6 t/m³(100lbs / per cubic ft)

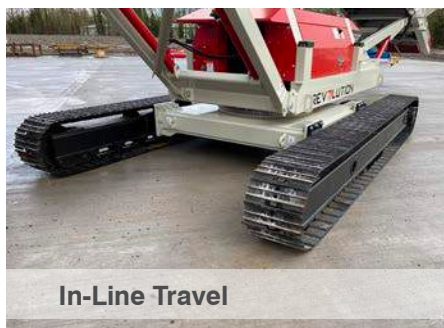


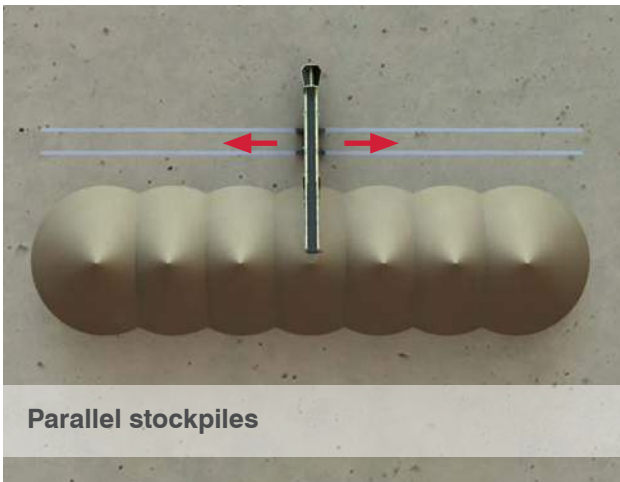
The TC Revolution is a track mounted fully mobile stockpiling conveyor with a centre mounted slew bearing that enables 360° rotation. With the ability to create parallel stockpiles and a radial stockpile from one fixed feed in point, the TC Revolution shows unrivalled mobility and greatly enhances stockpile capacities.

- Radial stockpile from one fixed feed in point
- Create Parallel Stockpiles
- Centre mounted Tracks
- Folded Plate - X Boom and Ribbed Boom
- 20m, 21m & 24m versions
- Maximum Flexibility



REVOLUTION





TRACKED REVOLUTION STOCKPILING CONVEYORS (UP TO 600 TPH)*

				CONICAL STOCKPILE	CONICAL STOCKPILE	RADIAL STOCKPILE	RADIAL STOCKPILE
Machine	Conveyor Length	Discharge Height (20 degrees)	Belt Width	Stockpile Volume (180 degrees)	Stockpile Mass @ 1.6t/m ³ (180 degrees)	Stockpile Volume (180 degrees)	Stockpile Mass @ 1.6t/m ³ (180 degrees)
TC 421 Revolution	21.8 m (71ft)	9.4m (31ft)	1050 mm (42")	1,531 m ³ (2,003 yd ³)	2,208 Tonnes (2,434 Ton)	8,926 m ³ (11,674 yd ³)	14,282 Tonnes 15,743 Ton
TC 621 Revolution	21.8 m (71ft)	9.4m (31ft)	1050 mm (42")	1,531 m ³ (2,003 yd ³)	1,904 Tonnes (2,105 Ton)	8,926 m ³ (11,674 yd ³)	14,282 Tonnes 15,743 Ton
TC 420X Revolution	20m (66 ft)	9m (28 ft 4")	1050 mm (42")	1,177 m ³ (1,539 yd ³)	1,884 Tonnes (2,076 Ton)	7,517 m ³ (9,832 yd ³)	12,028 Tonnes 13,258 Ton
TC 424X Revolution	24m (78 ft)	10m (33ft)	1050 mm (42")	1,844 m ³ (2,412 yd ³)	2,710 Tonnes (2,987 Ton)	10,790 m ³ (14,114 yd ³)	15,232 Tonnes 16,790 Ton

*Based on bulk density of 1.6 t/m³(100lbs / per cubic ft)



TCL 100 STOCKPIILING AGGREGATES

LATTICE TCL 100

The TCL 100 is a track mounted lattice frame conveyor. The TCL 100 can stockpile up to a working angle of 28 degrees which provides a much larger stockpile capacity for light bulky materials and at the same time improves plant mobility by removing material from the processing equipment.

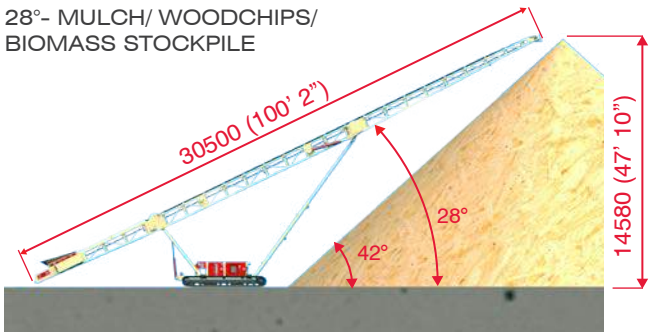


TCL 100 STOCKPIILING COAL

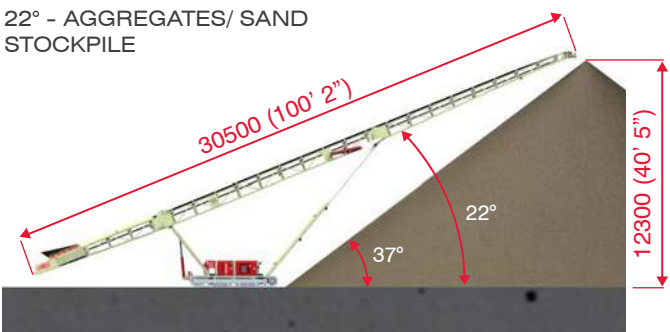


TCL 100 STOCKPIILING SAND FROM A TROMMEL

28°- MULCH/ WOODCHIPS/
BIOMASS STOCKPILE



22° - AGGREGATES/ SAND
STOCKPILE



TCL100 TRACKED STOCKPIILING CONVEYOR - LATTICE (UP TO 1500 TPH)*

Angle of Conveyor Belt (Degrees)	Stockpile Height		Stockpile Capacity (Volume)		Stockpile Capacity (Mass) @ 1.6t/m ³	
	(m)	(ft)	(m3)	(yd3)	(Tonnes)	(Ton)
28°	14.58	47' 10"	4,010	5,240	6,410	7.060
22°	12.3	40' 5"	3,440	4,490	5,500	6,060
18°	10.82	35' 6"	2,340	3,060	3,740	4,120

*Based on bulk density of 1.6 t/m³(100lbs / per cubic ft)

LATTICE RANGE - HEAVY DUTY



LATTICE RANGE

The Telestack heavy duty lattice frame is renowned for its extra strength

- Used for 400 - 1500 TPH applications
- Typically used for lengths 24m (80ft) and above
- More strength from less steel



TCL 431 TRACKED CONVEYOR



TCL 431R STOCKPIILING WOODCHIPS



TCL 1031 TRACKED CONVEYOR



TCL 1031 TRACKED CAONVEYOR STOCKPIILING AGGREGATE AFTER PRIMARY JAW CRUSHER

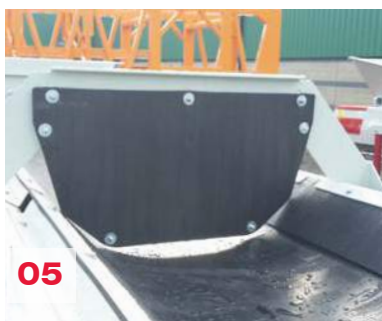
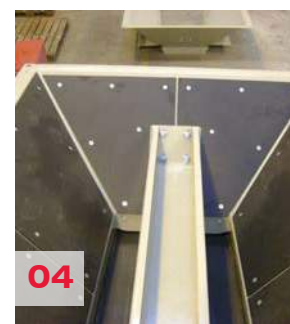
TRACKED STOCKPIILING CONVEYORS - LATTICE (UP TO 1500 TPH)*

Machine	Conveyor Length	Discharge Height (20 degrees)	Belt Width	Stockpile Volume	Stockpile Mass @ @ 1.6t/m ³
TCL 824 - 1024	24 m (78 ft)	10.8 m (35 ft 2")	1050 mm (42")	2,085 m ³ (2,730 yd ³)	3,340 Tonnes (3,680 Ton)
TCL 431- 631- 831	31 m (101 ft)	12.7 m (41 ft 2")	1050 mm (42")	3,150 m ³ (4117 yd ³)	5,030 Tonnes (5,544 Ton)
TCL 1031	31 m (101 ft)	12.7 m (41 ft 2")	1200 mm (48")	3,150 m ³ (4117 yd ³)	5,030 Tonnes (5,544 Ton)
Machine	Conveyor Length	Discharge Height (20 degrees)	Belt Width	Stockpile Volume (180 degrees)	Stockpile Mass @ 1.6t/m ³ (180 degrees)
TCL 824 - 1024R	24 m (78 ft)	10.8 m (35 ft 2")	1050 mm (42")	8,435 m ³ (11,030 yd ³)	13,490 Tonnes 14,870 Ton)
TCL 431- 631- 831R	31 m (101 ft)	12.7 m (41 ft 2")	1050 mm (42")	19,050 m ³ (24,910 yd ³)	30,470 Tonnes (33,590 Ton)
TCL 1031 - 1531R	31 m (101 ft)	12.7 m (41 ft 2")	1200 mm (48")	19,050 m ³ (24,910 yd ³)	30,470 Tonnes (33,590 Ton)

*Based on bulk density of 1.6 t/m³(100lbs / per cubic ft)



STANDARD OPTIONS





- 01 Hydraulic folding tail section
- 02 All electrical conveyor (Diesel Engine for tracking and hydraulic functions)
- 03 Dual power (Electric & Diesel)
- 04 Hardened Steel Liners
- 05 Anti roll back measures
- 06 Side Skirting
- 07 Belt Upgrades (Heavy Duty) / Chevron to suit material
- 08 Overband Magnets
- 09 Feed-boot extensions
- 10 Dust covers
- 11 Dust Suppression
- 12 Radio remote control
- 13 On board sensors for Automatic Stockpiling
- 14 Parallel / Revolution travel tracks
- 15 Tier 4 (Euro 3B) Engine

TRANSPORTATION & CONTAINERISATION

The ease of transport makes it very easy and cost efficient for transporting these units globally. Each unit can be transported on a low loader trailer to move easily from site to site. Set up time on site is 15 minutes. Each unit can be packed into 40ft containers and shipped anywhere in the world.



*METHOD OF TRANSPORT DEPENDENT ON MODEL

- X Range - Tracks directly in - out of container
- TC Standard Range - Tracks need to be fitted on site
- TC Radial Range- Tracks & Conveyor need to be fitted on site



GLOBAL PORT EQUIPMENT 
Iberia

Avda. De Europa 26,
ATICA 5,2a planta
28224 Pozuelo de Alarcón
Madrid - Spain

+34 676 650 601
iberia@globalportequipment.com
www.globalportequipment.es



**THE
POWER
TO MOVE
MATERIALS**